

UNWINDER/REWINDER PI AU/AB 320 TWO DEVICES - ONE UNITE

Label Un-/Rewinder at industrial level

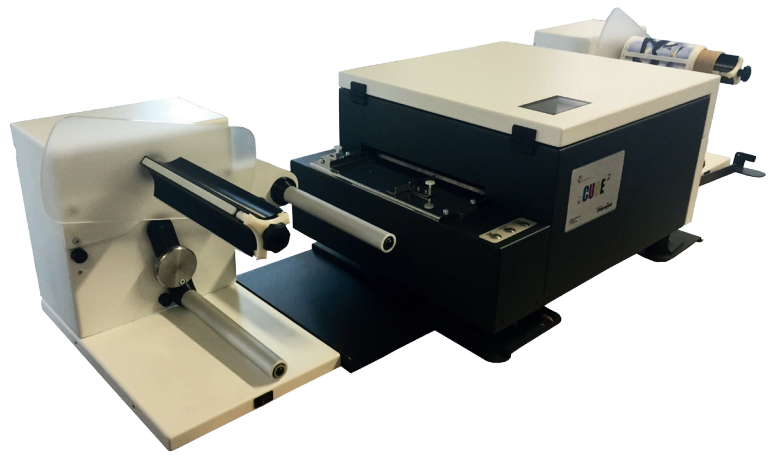
- ▶ One unit with both functions of un- and rewinder
- ▶ Durable steel case
- ▶ Programming option
- ▶ High-torque motor
- ▶ Automatic reverse operation to return the labels
- ▶ Speed control via dancer

EQUIPMENT

- ✓ Power Supply 100 – 240V ~ / 50/60 Hz

EQUIPMENT

- ✓ Other core diameters on request
- ✓ Baseplate



DATA SHEET

Maximum material width

250 mm

Max winding diameter

320mm

Core diameter

76mm

Winding speed

max 300mm / s

Dimensions Height x Width x Depth

330 mm x 280 mm x 445 mm

Weight

16 kg

Working temperature

10 – 35 °C

Operating voltage

24 V DC with mains adapter 100 – 240V ~ / 50 / 60 Hz

INDIVIDUAL SOLUTIONS

Please tell us more about your ideas and we produce the materials according to your requirements.

- ▶ 16 million colours for top-quality labels
- ▶ Maximum flexibility in design, colours and forms
- ▶ Brilliant products manufactured at high speed

Leading manufacturer of digital solutions in printing

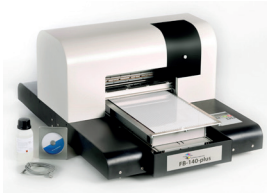
As a leading manufacturer of digital solutions for industrial printer systems we are specialized in delivering individual and customized solutions for a wide range of demands and challenges.

The continuous on-going development of our existing systems as well as developing new innovative systems are our motivation. The process of constantly reinventing ensures our customers great benefit.

To provide our customers the best possible service: All materials and consumables are in stock and available whether inks, printheads or other consumables. A steady shipping time guarantees our clients little downtime and thus a high efficiency. We are manufacturing in Germany.



PRODUCT PORTFOLIO - WE ARE MANUFACTURER OF DIGITAL SOLUTIONS



TI Printer 140 plus

Thermo-Ink-Printer for mechanical and chemical industrie requirements.



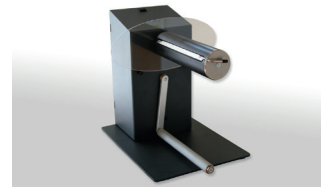
Speedstar 3000

Prints color labels in large numbers and high quality - inexpensively and quickly.



iCUBE3

Complete stand-alone printer solution with an onboard touch-display.



Unwinder EAB-320

External unwinder for big printing projects, suitable to our products.



INDUSTRY EXAMPLES

- ✓ automotive
- ✓ trade & logistic
- ✓ chemical industry
- ✓ mechanical engineering
- ✓ plant engineering
- ✓ electrical engineering
- ✓ pharmaceutical
- ✓ shipping
- ✓ craft and engraving
- ✓ companies

APPLICATION EXAMPLES

- ✓ machines, devices, plants
- ✓ company marking
- ✓ doorplates & advertising
- ✓ industry solution



OUR SERVICE

- ▶ individual consultation and implementation tailored to fit your needs and requirements
- ▶ service & support for any questions
- ▶ full availability of all consumables and spare parts